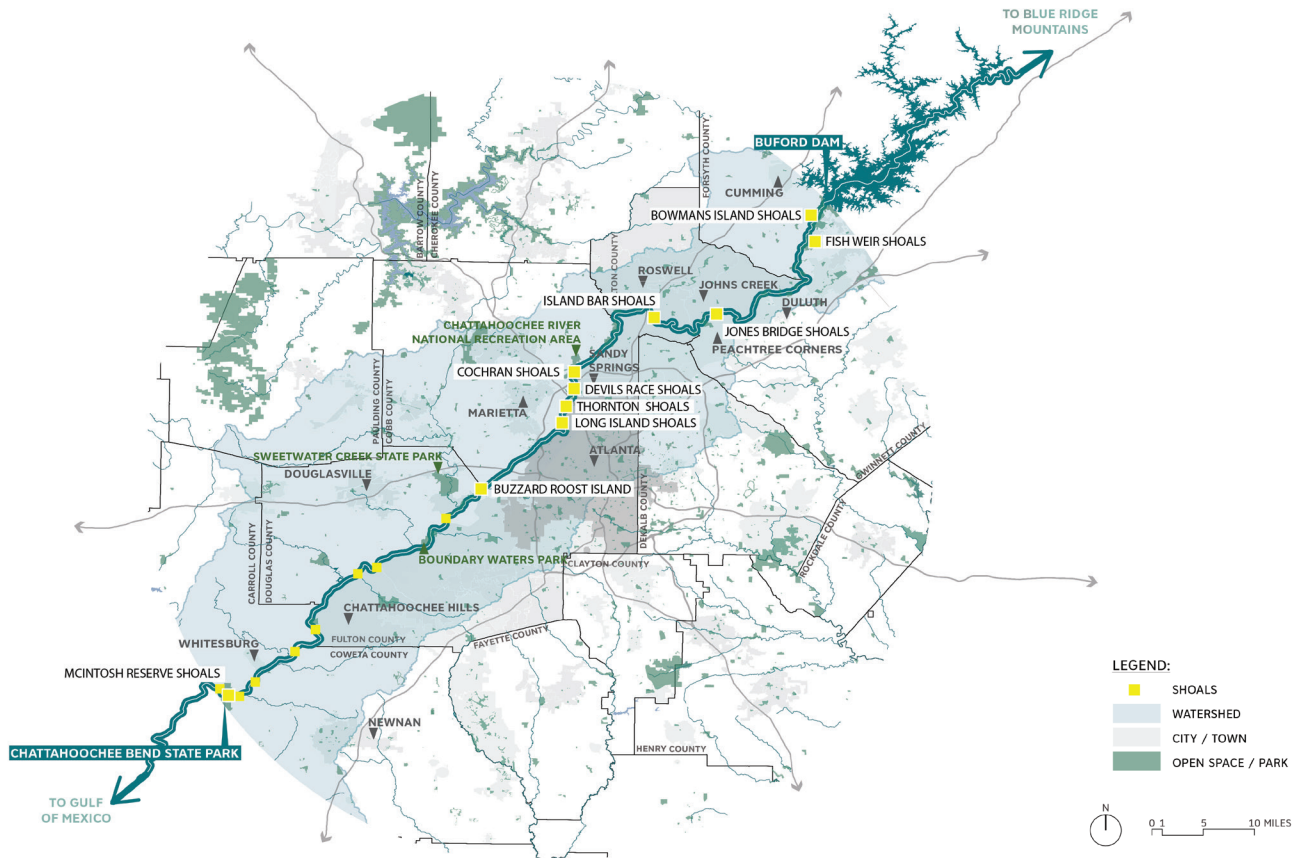


THE CHATTAHOOCHEE RIVER GREENWAY STUDY FOR THE CHATTAHOOCHEE RIVERLANDS

The Chattahoochee River is a shared historic, economic, cultural, and ecological resource of extraordinary value for metropolitan Atlanta and the state of Georgia. The river traverses the entire Atlanta metropolitan region, forms the boundary of many counties and cities, and provides both recreation and ecological services for communities for nearly 100 miles. The Chattahoochee River Greenway Study is an opportunity to reconsider the region's relationship to the river and create a new vision for the river's future that will raise public awareness, improve connections and access, identify potential areas for protection or investment, and build on a legacy of ecological conservation and protection.



PROJECT TEAM

SCAPE / New York, NY

Point of Contact:
info@chattahoocheeriverlands.com

Gresham Smith / Atlanta, GA

Biohabitats / Mount Pleasant, SC

Dr. Na'Taki Osborne Jelks / Atlanta, GA

Dr. Richard Milligan / Atlanta, GA

New South Associates / Atlanta, GA

Edwards-Pitman / Smyrna, GA

The Greenway Study is being managed by a joint Project Management Team (PMT) consisting of the **Atlanta Regional Commission (ARC)**, the **Trust for Public Land, Cobb County, and the City of Atlanta**. The project is being designed in collaboration with the **Chattahoochee Working Group (CWG)**.

SCAPE Landscape Architecture is leading a collaborative Design Team composed of nationally and locally renowned experts in the fields of **Landscape Architecture & Urban Design (SCAPE)**, **Transportation & Multi-Modal Trail Design (Gresham Smith)**, **Anthropology & History (New South Associates)**, **Ecological Design & Planning (Biohabitats)**, **Environmental Justice (Dr. Na'Taki Osborne Jelks)**, and **Geography (Dr. Richard Milligan)**.

The Design Team will apply its expertise with a committed set of partners and stakeholders to build a new identity and spatial framework for the Chattahoochee River. The Design Team's planning and design process will **engage** people across a broad social spectrum and will explore opportunities to **protect** and restore native ecologies, **invite** public access and stewardship, and **redefine** the river as a beloved local, regional and national asset.

Please visit www.chattahoocheeriverlands.com to learn more!

LIST OF TASKS

TASK 1 – PROJECT MANAGEMENT & STAKEHOLDER ENGAGEMENT PLAN

The Design Team created a **Project Management Plan (PMP)**, and a **Public and Stakeholder Engagement Plan (PSEP)** to establish a schedule and engagement strategy, identify target communities, institutions, residents, property owners, interested members of the public, and key stakeholders. Those documents have been collaboratively developed with the Project Management Team and the CWG.

TASK 2 – EXISTING LITERATURE & CONDITIONS ANALYSIS

The Design Team conducted a literature review and existing conditions analysis to investigate the Chattahoochee River's geography, geology, hydrology systems and morphology, ecology and conservation patterns, land use and development patterns, regulatory boundaries and frameworks, political boundaries, and urban infrastructure.

TASK 3 – CORRIDOR VISION & CONCEPT

The Design Team will synthesize an identity for the Chattahoochee River Greenway by using visioning, collaborative input, community response, and co-design sessions (in conjunction with Task 7, Public & Stakeholder input).

TASK 4 – GREENWAY PLAN DEVELOPMENT

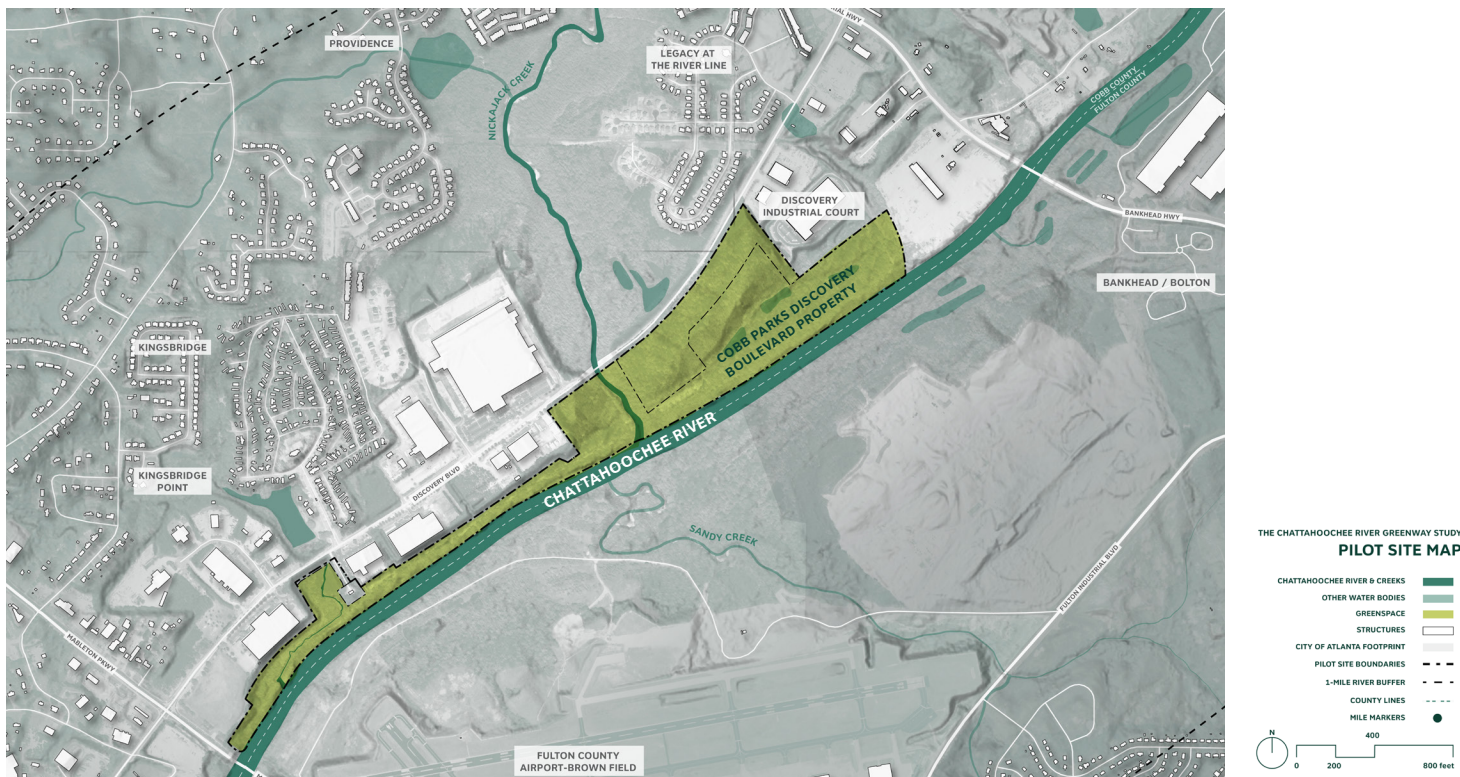
The Design Team will create a corridor Greenway Plan. The plan will focus on, but not be limited to, specific elements of the corridor including connections and alignments, regulatory framework and compliance, park and conservation planning, and implementation and concept proposals.

TASK 5 – IMPLEMENTATION STRATEGIES

The Design Team will work with the Project Management Team and Sub-Area committees to identify fundable and implementable projects at the conclusion of the Chattahoochee River Greenway Study. Potential projects are those that will qualify for a range of funding benchmarks, and a key set of stakeholders critical for their execution will be identified.

TASK 6 – PILOT PROJECT CONCEPTUAL PLAN

The Design Team will develop a conceptual design for a pilot project along a length of the Chattahoochee River in Cobb County. The study will propose a preferred alignment, develop a conceptual layout and typical sections for a greenway trail segment between Mableton Parkway and Veterans Memorial Highway, with access points and overlooks.



TASK 7 – PUBLIC & STAKEHOLDER INPUT

Throughout the Chattahoochee River Greenway Study, the Design Team will work with the Project Management Team, the CWG, and Sub-Area Committees to better understand the needs and wants of each sub area along the River. The Project Team (PMT + Design Team) will organize and participate in community meetings, design charrettes, public events, and maintain a public website. The project also includes signature participatory events, called River Rambles. These are intended to be immersive and fun events for hands-on engagement on the River.