



Annual Members
Meeting

Commissioner Monique Sheffield



Board of Commissioners

5 Member Elected Body

- 4 District Commissioners and 1 Chairperson

Roles and Responsibilities:

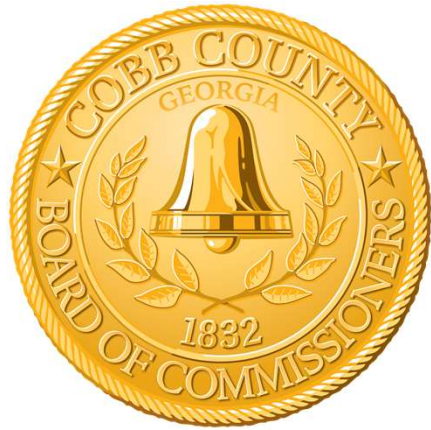
- Policy decisions (code amendments)
- Levying taxes and fees (permits, licenses, etc.)
- Approve county budget (budget is biennial) July effective Oct
- Approve contracts and related expenditures (road work)
- Adoption of county ordinances
- Final decision on zoning and other land use related matters

Meetings

- Agenda work sessions on 2nd and 4th Mondays
- BOC Public Meetings 2nd, 3rd, and 4th Tuesdays



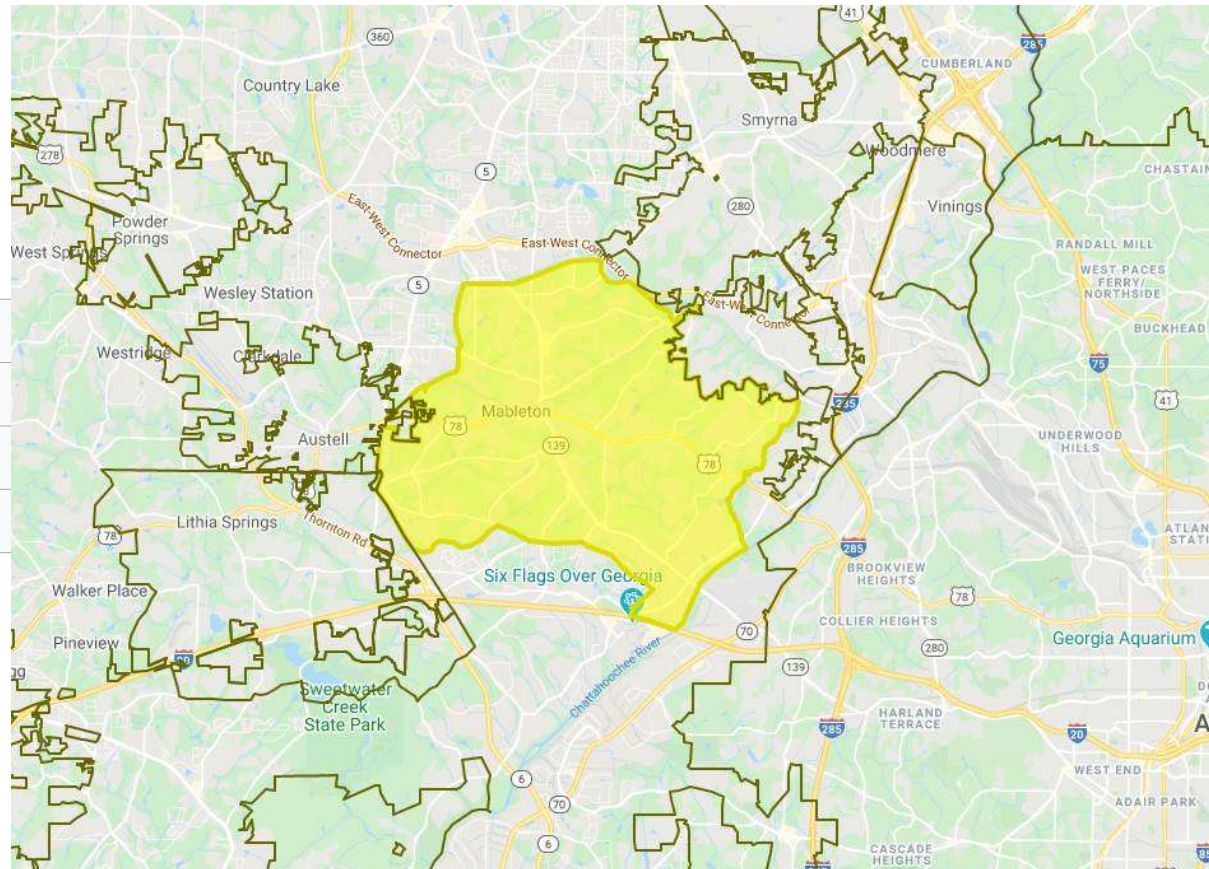
The State of Mableton



State of Mableton – Demographics

Area

• Total	20.8 sq mi (53.7 km ²)
• Land	20.6 sq mi (53.3 km ²)
• Water	0.2 sq mi (0.4 km ²)



The State of Mableton



State of Mableton – Demographics

Population Demographics

	2000 Census	Q4 2020 Estimate	2025 Projection	Percent Change 2025 to 2030
Total Population	28,718	40,269	43,107	7.05%
Population Density (Pop/ Sq Mi)	1,389.46	1,948.34	2,085.66	7.05%
Total Households	10,440	14,559	15,590	7.08%



The State of Mableton



State of Mableton – Demographics

Population by Age

	2000 Census		Q4 2020 Estimate		2025 Projection		Percent Change 2025 to 2030
0 to 4	2,147	7.48%	2,707	6.72%	2,573	5.97%	-4.96%
5 to 13	3,774	13.14%	5,881	14.60%	5,234	12.14%	-11.00%
14 to 17	1,779	6.19%	2,613	6.49%	3,033	7.04%	16.06%
18 to 24	2,119	7.38%	3,384	8.40%	4,410	10.23%	30.33%
25 to 34	4,639	16.15%	4,229	10.50%	4,929	11.43%	16.56%
35 to 44	5,453	18.99%	5,514	13.69%	4,457	10.34%	-19.16%
45 to 54	3,795	13.22%	6,380	15.84%	6,710	15.57%	5.17%
55 to 64	2,238	7.79%	5,050	12.54%	5,788	13.43%	14.63%
65 to 74	1,604	5.58%	3,058	7.59%	3,965	9.20%	29.68%
75 +	1,170	4.08%	1,455	3.61%	2,008	4.66%	38.02%
Median Age	35		38		39		



The State of Mableton



State of Mableton – Demographics

Housing Units

	2000 Census		Q4 2020 Estimate	
Total Housing Units	10,880		16,169	
Owner Occupied	7,969	73.24%	10,771	66.61%
Renter Occupied	2,500	22.97%	3,788	23.43%
Vacant	412	3.79%	1,610	9.96%



The State of Mableton



State of Mableton – Demographics

Housing Value

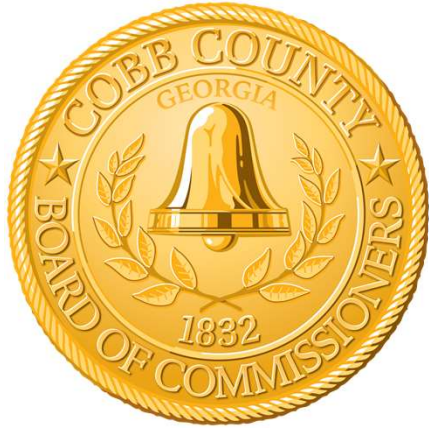
Under \$10,000	0.85%
\$ 10,000 to \$14,999	1.26%
\$ 15,000 to \$19,999	0.58%
\$ 20,000 to \$25,000	0.48%
\$ 25,000 to \$29,999	0.06%
\$ 30,000 to \$34,999	0.39%
\$ 35,000 to \$39,999	0.87%
\$ 40,000 to \$49,999	0.40%
\$ 50,000 to \$59,999	0.54%
\$ 60,000 to \$69,999	0.65%
\$ 70,000 to \$79,999	1.16%
\$ 80,000 to \$89,999	1.08%
\$ 90,000 to \$99,999	1.46%
\$ 100,000 to \$124,999	5.36%
\$ 125,000 to \$149,999	6.90%
\$ 150,000 to \$174,999	6.85%
\$ 175,000 to \$199,999	6.24%
\$ 200,000 to \$249,999	14.50%
\$ 250,000 to \$299,999	9.57%
\$ 300,000 to \$399,999	15.24%
\$ 400,000 to \$499,999	10.87%
\$ 500,000 to \$749,999	9.70%
\$ 750,000 to \$999,999	3.00%
Over \$1,000,000	1.77%

Average Home Value by Quarter

Average Home Value 18Q4	\$268,312
Average Home Value 19Q1	\$268,740
Average Home Value 19Q2	\$272,069
Average Home Value 19Q3	\$279,718
Average Home Value 19Q4	\$282,806
Average Home Value 20Q1	\$285,761
Average Home Value 20Q2	\$286,381
Average Home Value 20Q3	\$289,945
Average Home Value 20Q4	\$296,356
Median Home Value Q4 2020	\$251,576



The State of Mableton



State of Mableton – Demographics

Households by Income

	2000 Census		Q4 2020 Estimate		2025 Projection		Percent Change 2025 to 2030
\$0 - \$19,999	1,683	16.12%	1,362	9.35%	1,441	9.24%	5.79%
\$20,000 - \$49,999	3,687	35.31%	3,885	26.69%	3,798	24.36%	-2.24%
\$50,000 - \$74,999	2,451	23.48%	2,395	16.45%	2,135	13.69%	-10.88%
\$75,000 - \$99,999	1,449	13.88%	1,726	11.85%	1,979	12.69%	14.68%
\$100,000 - \$149,999	894	8.56%	2,671	18.34%	2,839	18.21%	6.30%
\$150,000 +	276	2.65%	2,520	17.31%	3,398	21.80%	34.87%
Average Hhld Income	\$55,727		\$96,128		\$109,256		
Median Hhld Income	\$48,801		\$70,773		\$78,821		
Per Capita Income	\$20,259		\$34,753		\$39,513		



The State of Mableton



State of Mableton – Demographics

Residential Employment

	2000 Census	Q4 2020 Estimate			% Change 2000 to 2025
Total Labor Force	21,784		30,374		39.4%
In Labor force	15,269	70.09%	22,338	73.54%	46.29%
Employed	14,463	94.72%	20,814	93.18%	43.92%
Unemployed	778	5.10%	1,523	6.82%	95.73%
In Armed Forces	28	0.13%	122	0.40%	39.44%
Not in Labor force	6,515	29.91%	8,037	26.46%	23.36%



The State of Mableton



State of Mableton – Parks

Discovery Park at Riverline

Event: Ribbon Cutting Ceremony
Date: Wednesday, March 31, 2021
Time: 10:30am
Location: 6653 Discovery Blvd, Mableton



The State of Mableton



State of Mableton – Parks

Mableton Town Square

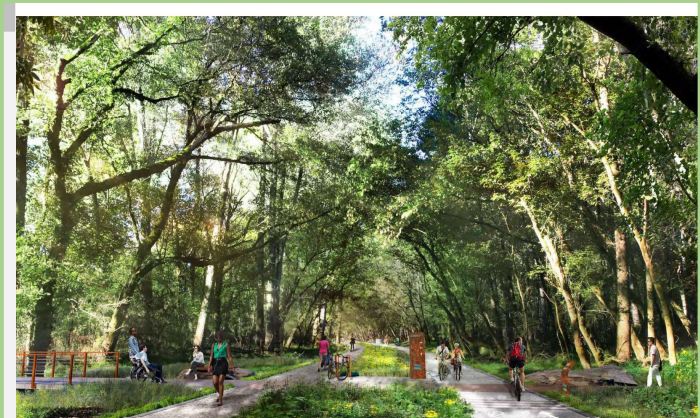


The State of Mableton



State of Mableton – Parks

Chattahoochee River Trail – Mableton Greenway Pilot





State of Mableton – Parks

Chattahoochee River Trail – Mableton Greenway Pilot



BOARDWALK BEFORE



BOARDWALK CONCEPT



The State of Mableton



State of Mableton – Libraries

South Cobb Regional Library

- Facility size – 20,000
- Projection to expand to 25,000 in 5-10 years
- Printer, copier, and scanning services
- Wi-Fi
- Study rooms, reference and adult services, activity room
- 1 community room
- One of the highest use locations for computer usage
- Renovated in 2018

Reopen for limited service beginning Monday, March 15

Monday: 10 am - 8 pm

Tuesday - Friday: 10 am - 6 pm

Curbside hold pickup is available Mondays from 10 am - 7:45 pm and Tuesdays through Fridays from 10 am - 5:45 pm. Outdoor bookdrops are available.



The State of Mableton



State of Mableton – Transportation Projects

Cobb DOT Projects Under Construction

Discovery Boulevard Sidewalks

- 5' wide sidewalk along both sides of Discovery Boulevard
- Fill in the gaps with existing sidewalks between Veterans Memorial Highway and Discovery Park
- Scheduled completion: Spring 2021.

Hicks Road at Concord Road

- Intersection improvements on Hicks Road at Concord Road
- Improvements will include turn lanes, sidewalks, drainage improvements, and a signal upgrade
- Scheduled completed: Summer 2021



The State of Mableton



State of Mableton – Transportation Projects

Cobb DOT Projects Under Construction

Mableton Parkway Pedestrian Improvements

- Construction of ten-foot wide trail on the west side of Mableton Parkway,
- and a five-foot wide sidewalk on the east side, from Factory Shoals Road to Discovery Boulevard
- Traffic signal upgrades
- Scheduled completion: Spring 2023

Factory Shoals Road at Mableton Parkway

- School zone safety and operational Improvements associated with the CCSD Harmony Leland and Clay Elementary Schools relocation project
- Improvements Factory Shoals Road and Mableton Parkway
- A right turn lane onto Mableton Parkway
- Scheduled completion: Summer 2021



The State of Mableton



State of Mableton – Transportation Projects

Cobb DOT Projects Under Construction

RiverView Road

- Realign the intersection of RiverView Rd with Veterans Memorial Highway
- Safety and operational improvements along River View Road, from Veterans Memorial Highway to the Smyrna City Limit boundary line near Nichols Drive
- Scheduled completion: Summer 2021

Cobb DOT Upcoming Construction Project

Buckner Road Sidewalk

- Construction of a five-foot wide sidewalk along the southside of Buckner Road between Veterans Memorial Highway and Rosie Lane
- Scheduled to begin in Spring 2021



The State of Mableton



State of Mableton – Transportation Projects

GDOT Project

Veterans Memorial Highway at Lindley Middle School

- Add a pedestrian hybrid beacon with island on Veterans Memorial Highway at Lindley Middle School
- Scheduled completion Spring 2021

Projects Under Design

Chattahoochee River Trail

- Phase 1 approximately 1.0 miles of county-owned riverfront property
- Connect with Discovery Park at the River Line, looping to the northern end of the property and returning to the north bank of Nickajack Creek
- Will include 0.4 miles of paved multi-use trail and 0.6 miles of unpaved pedestrian trail.



The State of Mableton



State of Mableton - Development

STARTING IN THE MID \$300'S

MABLESTONE
MABLETON, GEORGIA



COMING SOON!!!

On Street Parking:

WWW.MABLESTONE.COM

FOR MORE INFO: (404) 692- 55561
SALES@MABLESTONE.COM



The State of Mableton



State of Mableton - Development



The State of Mableton



State of Mableton - Development

Z-39

Mableton Parkway and
Puckett Drive



The State of Mableton



State of Mableton - Zoning

“In the Zone”

Want to have a voice of the development in your community? Stay connected by being “In the Zone.” Zoning and land use decisions shape our communities for generations, take part in the decision-making process.

Join Commissioner Monique Sheffield and Planning Commissioner Galt Porter for their virtual meeting every 4th Wednesday of the month at 7 p.m. *The next meeting will be held on March 24th.* Please email deedra.watts@cobbcounty.org and request a link to the meeting.



The State of Mableton





State of Mableton – Cityhood

Cityhood Updates:

- A new charter and legislation submitted to South Cobb Alliance. Will be reviewed and revised before presenting to Representative Thomas for filing
- The document can be found on the website
- Surveys are available for the community to participate in as well as several Advisory Groups for citizenship participation.
- Virtual information sessions and Advisory Group meetings will begin in April 2021
- www.SouthCobbAlliance.org



The State of Mableton



State of Mableton – Employment Opportunities

Company: Crete Carrier Corporation

Position: Tractor Trailer Technician

Location: Marietta, GA

Salary: \$18 - \$26 an hour

Posted: 3/2/21

Apply online at www.indeed.com

Company: McClane Company

Position: Shipping/Receiving Assistant

Location: Austell, GA

Posted: 3/2/21

End Date: Until Filled

Apply online at <http://www.mclanecareers.com>



The State of Mableton



State of Mableton – Employment Opportunities

Company: CorTech

Position: Warehouse Associate III

Location: Kennesaw, GA

Salary: \$15 an hour

Posted: 3/2/21

Apply online at <https://jobs.cor-tech.net> or www.indeed.com

Company: GMH University Housing

Position: Building Maintenance / Porter

Location: Marietta, GA

Posted: 3/2/21

Apply online at www.indeed.com



The State of Mableton



Thank You
Commissioner Monique Sheffield