

July 27, 2022

Cobb County Planning Commission
100 Cherokee Street
Marietta, GA 30090



Re: Z-53 LEARSI Development Partners, LLC

Dear Mr. Chairman and Commissioners:

I am writing on behalf of the Mableton Improvement Coalition to ask that you recommend approval of this application with the conditions listed below. We are pleased to see this property return to a residential category, in keeping with the surrounding area. The conditions we are requesting are:

1. The final site plan should be similar to the attached site plan provided to us by the applicant.
2. The final elevations for the homes be similar to the attached images provided to us by the applicant.
3. The shed on the 1080 Old Bankhead Highway lot be either removed or rehabilitated in a style that matches the architecture of the home.

As always, thank you for the opportunity to be a part of the public comment process. If you have any questions, please feel free to contact me at 770 948-5394.

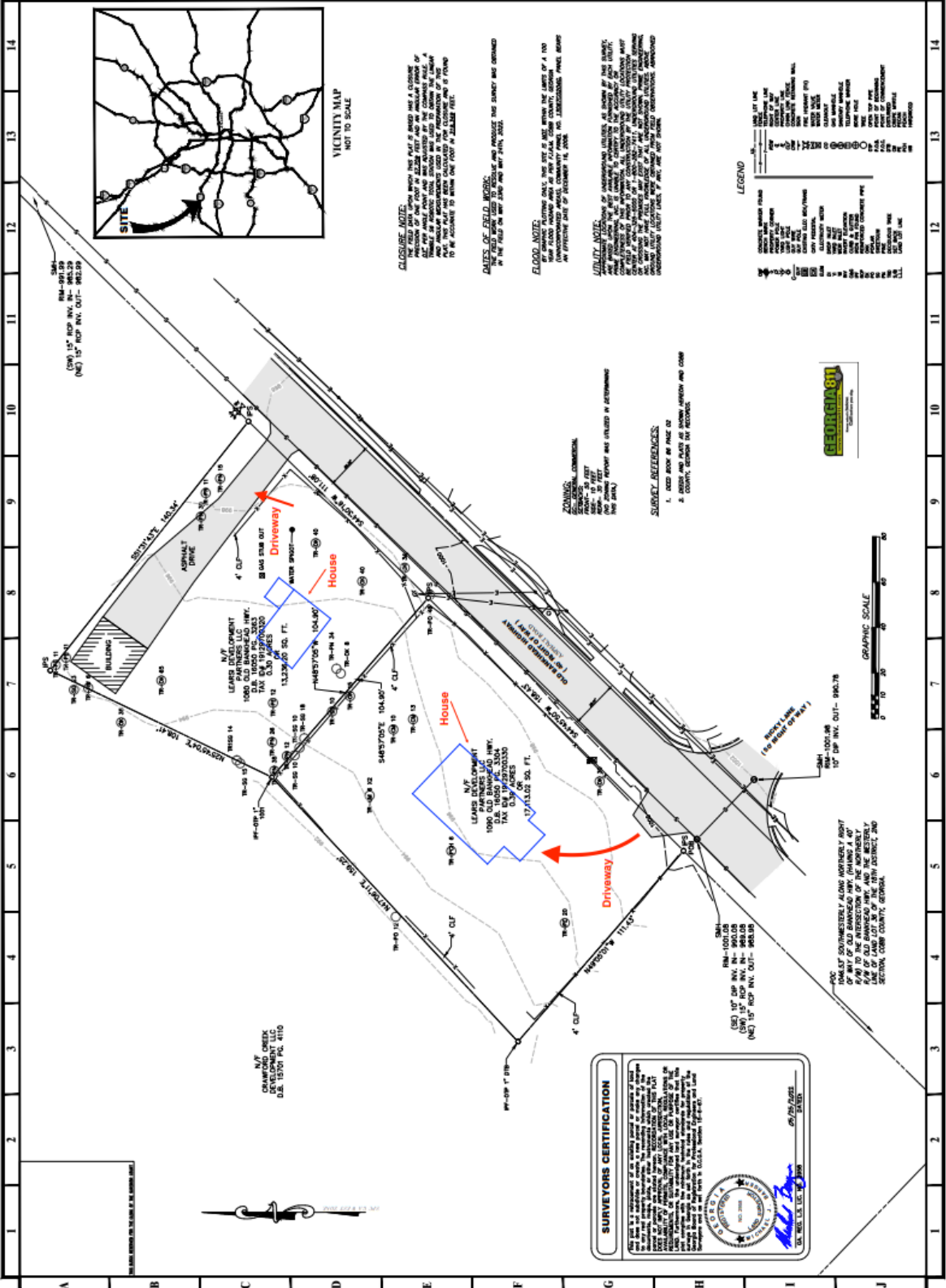
Sincerely,

A handwritten signature in black ink, appearing to read "Robin Meyer".

Robin Meyer
Zoning Committee Chair

Cc: Cobb County Board of Commissioners
John Pederson, Cobb County Zoning Division Manager
Robin Stone, Deputy County Clerk
Shavsha Israel, Applicant
MIC Board of Directors and Zoning Committee

DRAWING DATE: 5/5/2023		DRAWING TITLE: BOUNDARY AND TOPOGRAPHIC	
DRAWING NUMBER: 194-090		PROJECT NUMBER: 194-090	
DESIGNED BY: JRE	CHECKED BY: MFB	DATE: 5/5/2023	PROJECT: LEARN'S DEVELOPMENT PARTNERS, LLC
PREPARED FOR: LEARN'S DEVELOPMENT PARTNERS, LLC 1088 & 1098 OLD MARKET HIGHWAY 2ND SECTION, COBB COUNTY, GEORGIA			
PROJECT: CHERRY CREEK DEVELOPMENT, LLC D.E. 15201 P.C. 410			



PRIME ENGINEERING INCORPORATED
 10 NORTHFIELD PARKWAY NW
 ATLANTA, GEORGIA 30328
 404-433-7170

LEARN'S DEVELOPMENT PARTNERS, LLC
 1088 & 1098 OLD MARKET HIGHWAY
 2ND SECTION, COBB COUNTY, GEORGIA

CHERRY CREEK DEVELOPMENT, LLC
 D.E. 15201 P.C. 410

BOUNDARY AND TOPOGRAPHIC

DATE: 5/5/2023

PROJECT: LEARN'S DEVELOPMENT PARTNERS, LLC

1088 & 1098 OLD MARKET HIGHWAY
 2ND SECTION, COBB COUNTY, GEORGIA

CHERRY CREEK DEVELOPMENT, LLC
 D.E. 15201 P.C. 410

