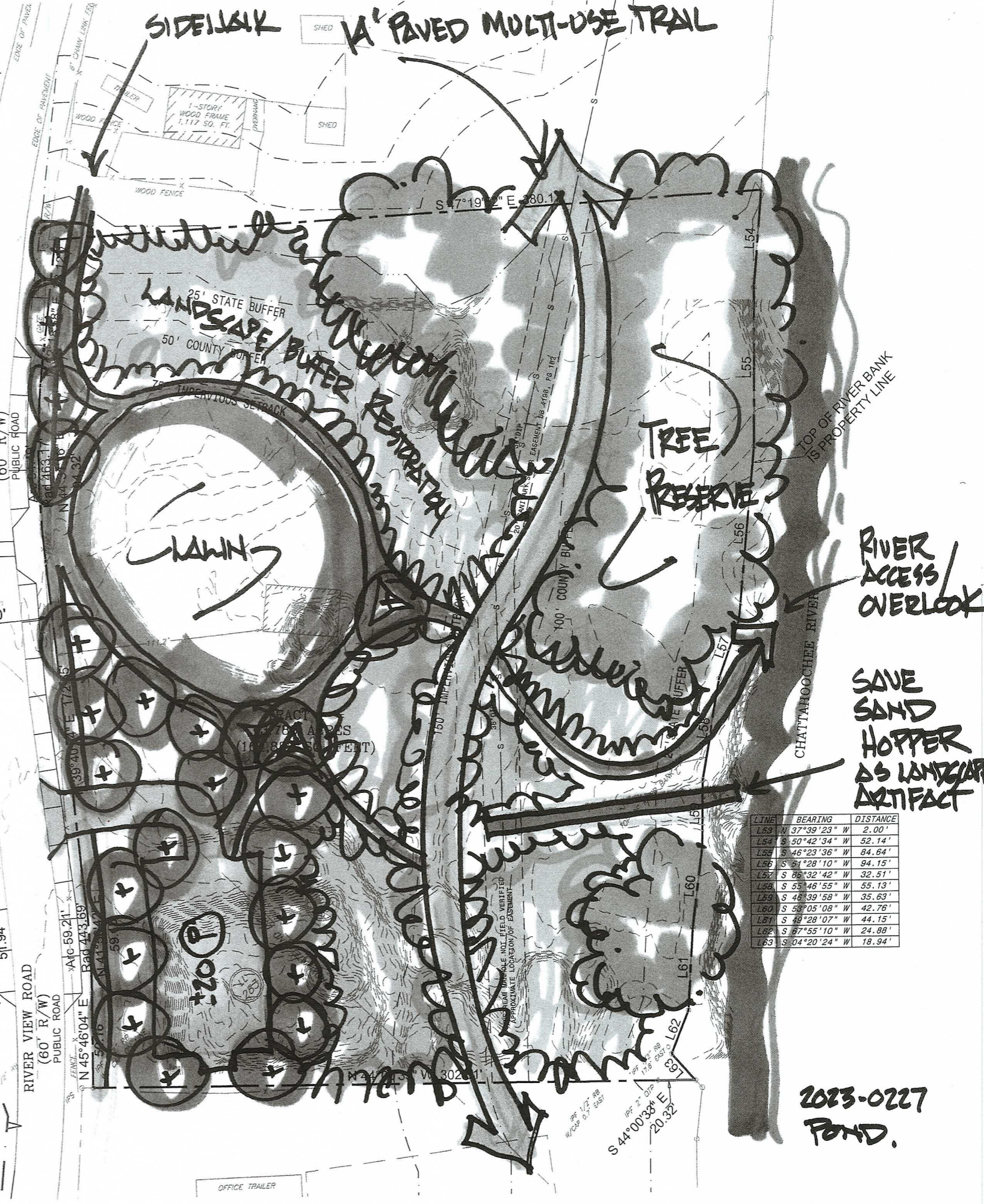
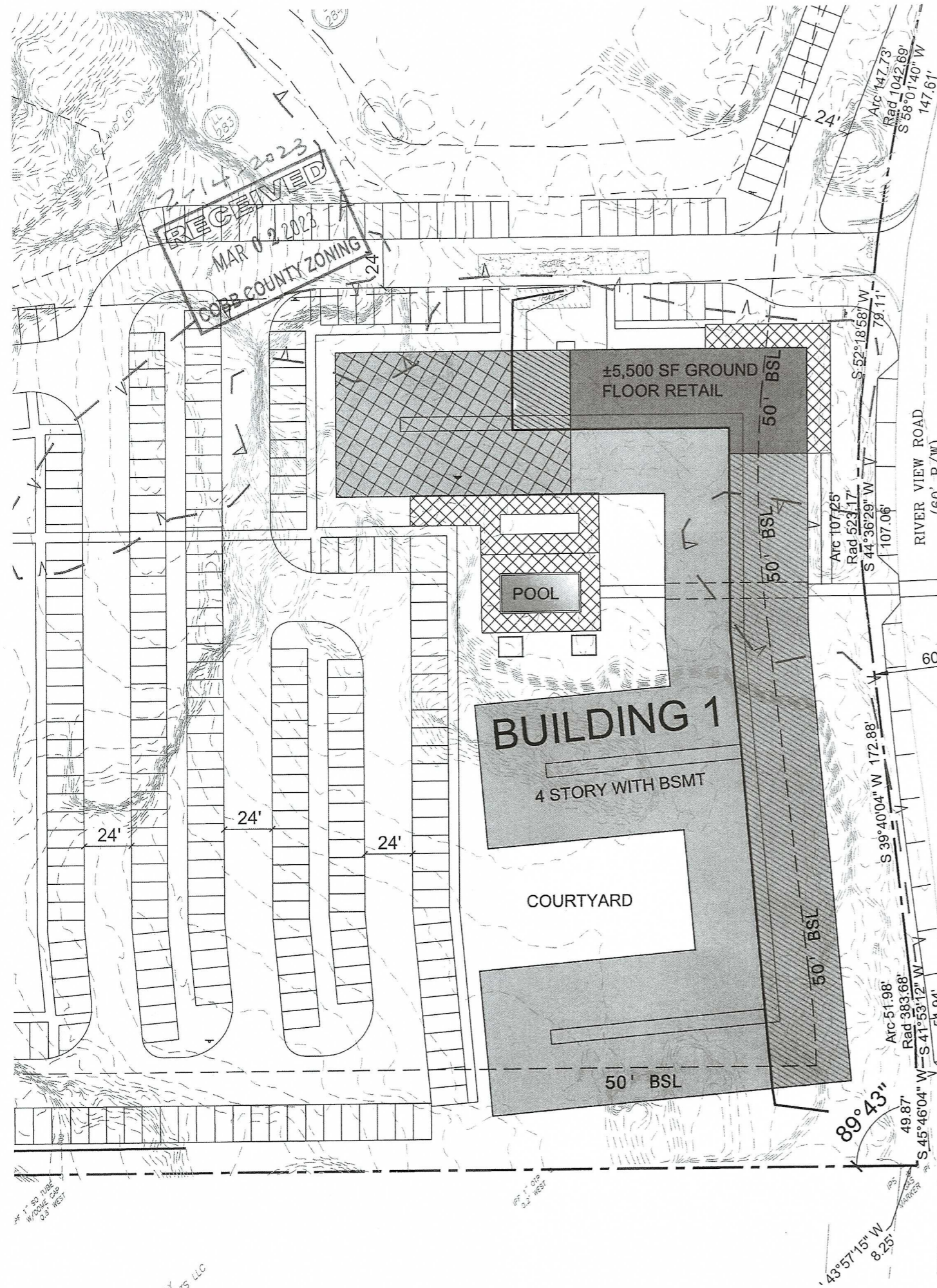


RECEIVED
 MAR 02 2023
 COBB COUNTY ZONING



LINE	BEARING	DISTANCE
L53	N 37°39'23" W	2.00'
L54	S 50°42'34" W	52.14'
L55	S 46°23'36" W	84.64'
L56	S 51°28'10" W	94.15'
L57	S 66°32'42" W	32.51'
L58	S 58°46'55" W	55.13'
L59	S 48°39'58" W	35.63'
L60	S 58°05'08" W	42.78'
L61	S 49°28'07" W	44.15'
L62	S 67°55'10" W	24.88'
L63	S 04°20'24" W	18.94'

2023-0227
 FOND.